



figure

215

ends
formflange
straight
 STOP VALVE zGLO


| body material | nominal pressure | nominal diameter | max temperature |
|---------------------------|------------------|------------------|-----------------|
| A grey cast iron | A 6 bar | DN 15-300 | 300°C |
| | C 16 bar | | |
| C nodular cast iron | C 16 bar | DN 15-200 | 350°C |
| | D 25 bar | | |
| E bronze | C 16 bar | DN 15-125 | 225°C |
| | B 10 bar | DN 150-200 | |
| | A 6 bar | DN 250-300 | |
| F cast steel | E 40 bar | DN 15-200 | 400°C |
| I cast stainless steel | E 40 bar | DN 15-200 | 400°C |



correspond to the pressure equipment directive 2014/68/EU
marking CE for DN≥32

FEATURES

- high tightness (leakproofness class - A acc. to EN -12266 - 1)
- compact settlement
- environment-friendly
- tests acc. to EN - 12266 - 1
- flanges drilled according to EN 1092-2 for body material A, C, E
- flanges drilled according to EN 1092-1 for body material F
- face-to-face dimension according to EN 558-1 series 1

APPLICATION*

- industry
- heating
- refrigeration and air conditioning
- hot and cold industrial water
- industrial oils
- steam
- compressed air
- neutral fluids

* not all of the applications are suitable for all of the executions

Data given can be changed without notice.

Edition 11/2017



figure

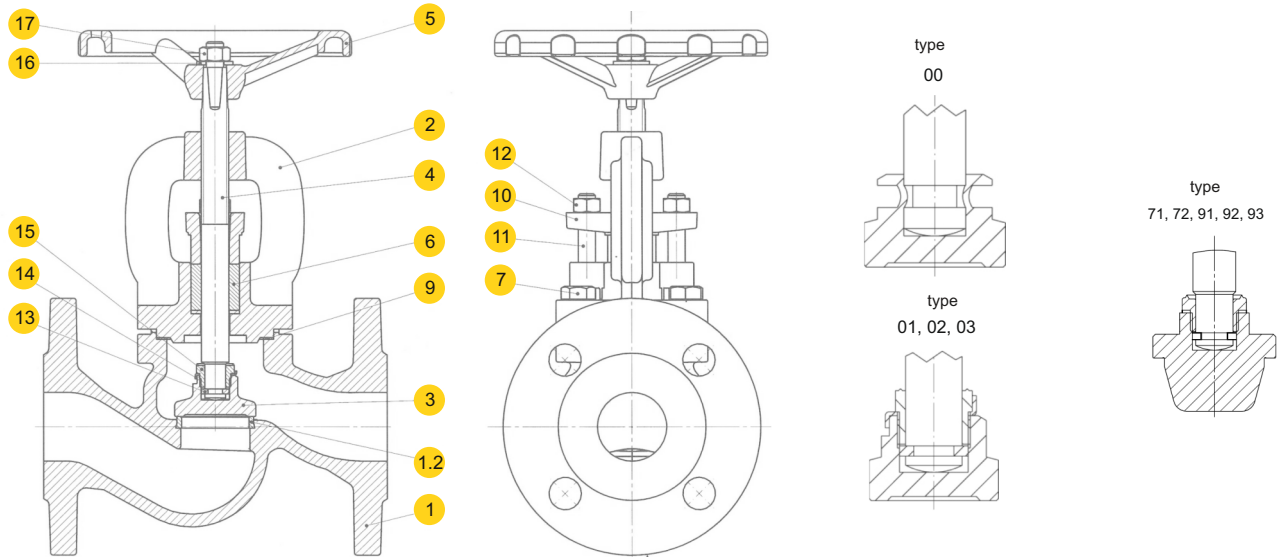
215

ends
form

flange
straight

MATERIALS

STOP VALVE



| | body material | A | | | | C | | | E |
|------------------|---------------|-------------------------------------|-------------------------|----------------------|-------------------------|---|----------------------|-------------------------|-------------------------|
| | | type | 00 | 01;04;71;91 | 02;05;72;92 | 03;13 | 01;04;71;91 | 02;05;72;92 | 03;13 |
| 1 | body | EN – GJL-250 5.1301 (ex. JL1040) | | | | EN – GJS-400 – 18-LT 5.3103 (ex. JS1025) | | | CuSn5Zn5Pb5-C CC491K |
| 1.2 | seat ring | X12Cr13 1.4006 | CuSn10 – C CC480K | | X12Cr13 1.4006 | CuSn10 – C CC480K | | CuSn5Zn5Pb5-C CC491K | |
| 2 | bonnet | EN – GJL-250 5.1301 (ex. JL1040) | | | | EN – GJS-400 – 18-LT 5.3103 (ex. JS1025) | | | CuSn5Zn5Pb5-C CC491K |
| 3 | disc | X20Cr13 1.4021 | CuSn10 – C CC480K | | X20Cr13 1.4021 | CuSn10 – C CC480K | | CuSn5Zn5Pb5-C CC491K | |
| 4 | stem | X20Cr13 1.4021 | CuZn40Mn1,5 | CuSn10 – C CC480K | X20Cr13 1.4021 | CuZn40Mn1,5 | CuSn10 – C CC480K | CuZn35Ni | |
| 5 | hand-wheel | EN-GJS500-7 5.3200 (ex. JS1050) | | | | | | | |
| 6 | gland packing | graphite | | | | | | | |
| 7 | hexagon bolt | 8.8 | | | A2-70 | 8.8 | | A2-70 | |
| 9 | gasket | graphite+ NiCr | | | | | | | |
| 10 | gland | EN – GJL-250 5.1301 (ex. JI1040) | | | | EN – GJS-400 – 18-LT 5.3103 (ex. JS1025) | | | CuSn5Zn5Pb5-C CC491K |
| 11 | T-bolt | 5.8 + zinc galvanized | | | | | | | A2-70 |
| 12 | nut | 8 + zinc galvanized | | | | | | | A2-70 |
| 13 | ring | ----- | X20Cr13 1.4021 | CuSn10 – C CC480K | X20Cr13 1.4021 | CuSn10 – C CC480K | | CuSn5Zn5Pb5-C CC491K | |
| 14 | washer | ----- | X6CrNiTi18-10 1.4541 | CuSn6 | X6CrNiTi18-10 1.4541 | CuSn6 | | CuSn6 | |
| 15 | screw | ----- | X20Cr13 1.4021 | CuSn10 – C CC480K | X20Cr13 1.4021 | CuSn10 – C CC480K | | CuSn5Zn5Pb5-C CC491K | |
| 16 | washer | carbon steel + zinc galvanised | | | | | | | X5CrNi18-10 1.4301 |
| 17 | nut | 8 + zinc galvanised | | | | | | | A2-70 |
| max. temperature | | 300°C | 300°C | 225°C | 350°C | 225°C | 225°C | 200°C | |

Data given can be changed without notice.

Edition 11/2017



figure

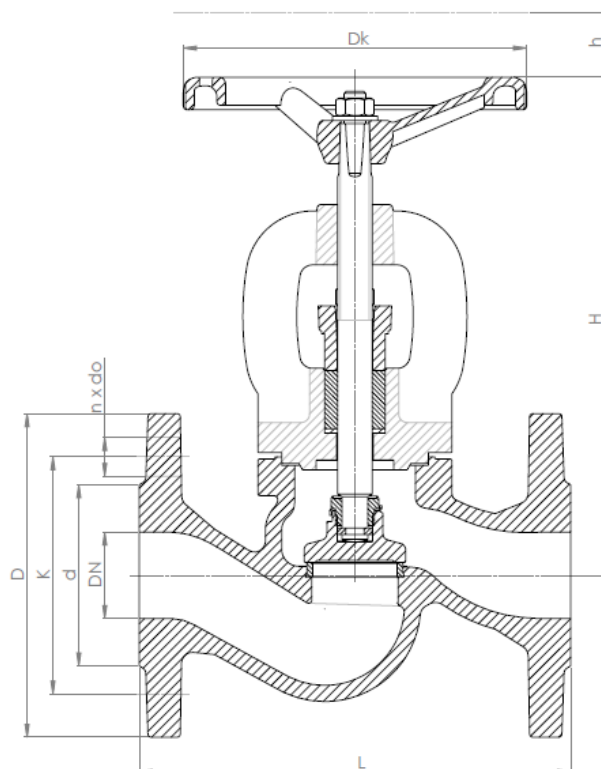
215

ends
form

flange
straight

MATERIALS

STOP VALVE



| DN | PN 6 | | | | PN 16 | | | | PN 25 | | | | PN 6, 16, 25 | | | | K _v s | K _v s |
|-----|------|-----|-----|-------|-------|-----|-----|-------|-------|-----|-----|-------|--------------|-----|-----|-----|------------------|-------------------|
| | D | d | K | n x d | D | d | K | n x d | D | d | K | n x d | Dk | h | L | H | | |
| mm | | | | | | | | | | | | | | | | | kg | m ³ /h |
| 15 | 80 | 38 | 55 | 4x11 | 95 | 46 | 65 | 4x14 | 95 | 46 | 65 | 4x14 | 100 | 5 | 130 | 167 | 3,3 | 5,9 |
| 20 | 90 | 48 | 65 | 4x11 | 105 | 56 | 75 | 4x14 | 105 | 56 | 75 | 4x14 | 100 | 5,5 | 150 | 167 | 3,9 | 7,4 |
| 25 | 100 | 58 | 75 | 4x11 | 115 | 65 | 85 | 4x14 | 115 | 65 | 85 | 4x14 | 120 | 7 | 160 | 175 | 5,0 | 13,0 |
| 32 | 120 | 69 | 90 | 4x14 | 140 | 76 | 100 | 4x19 | 140 | 76 | 100 | 4x19 | 120 | 14 | 180 | 186 | 6,6 | 18,0 |
| 40 | 130 | 78 | 100 | 4x14 | 150 | 84 | 110 | 4x19 | 150 | 84 | 110 | 4x19 | 160 | 20 | 200 | 235 | 8,4 | 30,0 |
| 50 | 140 | 88 | 110 | 4x14 | 165 | 99 | 125 | 4x19 | 165 | 99 | 125 | 4x19 | 160 | 25 | 230 | 248 | 12,0 | 41,0 |
| 65 | 160 | 108 | 130 | 4x14 | 185 | 118 | 145 | 4x19 | 185 | 118 | 145 | 8x19 | 180 | 35 | 290 | 260 | 17,3 | 79,0 |
| 80 | 190 | 124 | 150 | 4x19 | 200 | 132 | 160 | 8x19 | 200 | 132 | 160 | 8x19 | 200 | 41 | 310 | 291 | 22,7 | 115 |
| 100 | 210 | 144 | 170 | 4x19 | 220 | 156 | 180 | 8x19 | 235 | 156 | 190 | 8x23 | 250 | 31 | 350 | 338 | 35,8 | 181 |
| 125 | 240 | 174 | 200 | 8x19 | 250 | 184 | 210 | 8x19 | 270 | 184 | 220 | 8x28 | 250 | 48 | 400 | 384 | 52,8 | 225 |
| 150 | 265 | 199 | 225 | 8x19 | 285 | 211 | 240 | 8x23 | 300 | 211 | 250 | 8x28 | 320 | 54 | 480 | 429 | 74,2 | 364 |
| 200 | 320 | 254 | 280 | 8x19 | 340 | 266 | 295 | 12x23 | 360 | 274 | 310 | 12x28 | 360 | 77 | 600 | 529 | 126 | 690 |
| 250 | - | - | - | - | 405 | 319 | 355 | 12x28 | - | - | - | - | 360 | 120 | 730 | 638 | 200 | 1010 |
| 300 | - | - | - | - | 460 | 370 | 410 | 12x28 | - | - | - | - | 500 | 120 | 850 | 710 | 315 | 1460 |

Data given can be changed without notice.

Edition 11/2017



figure

215

ends
form

flange
straight



Kv Fig. 215-71

| | | HQLO ³ /h] FIG. 215 -71 | | | | | | | | | | | | | |
|------|-------|------------------------------------|-------|-------|-------|-------|-------|-------|--------|--------|--------|--------|--------|--------|--|
| i PØ | Gí 15 | Gí 20 | Gí 25 | Gí 32 | Gí 40 | Gí 50 | Gí 65 | Gí 80 | Gí 100 | Gí 125 | Gí 150 | Gí 200 | Gí 250 | Gí 300 | |
| CA | CAE | CAD | CAE | CAE | | | DA | | EA | CA | CE | | | | |
| C | CAD | CAE | CAE | CAE | DAE | EAB | EA | CA | CA | CA | CE | EA | EA | CA | |
| CA | CAE | CAE | | | | | | | | | | | | | |
| C | CAE | CAD | CAD | DAE | CAE | CA | CA | CA | CA | CA | EA | EA | CA | CA | |
| CA | CAD | CAE | | | | | | | | | | | | | |
| C | CAE | CAD | DAE | DAE | CAE | CA | CA | CA | DA | EA | CA | CA | CA | CA | |
| CA | CAE | CAE | | | | | | | | | | | | | |
| C | CAB | CAB | DAE | DAE | CAE | CA | CA | CA | EA | CA | CA | CA | CA | CA | |
| CA | CAE | DAE | | | | | | | | | | | | | |
| CA | CAE | DAE | | | | | | | | | | | | | |
| D | | | DAE | CAE | CAE | CA | CAE | EA | EA | CA | CA | CA | CA | DA | |
| D | | | DAE | CA | CAE | CA | CAE | EA | EA | CA | CA | CA | CA | DA | |
| D | | | EA | CAE | | CA | CAE | EA | CA | CA | CA | CA | CA | DA | |
| D | | | CA | CAE | | CAE | CA | EA | CA | CA | CA | CA | CA | DA | |
| DAE | | | CAE | | | | | | | | | | | | |
| E | | | | CAE | | | DAE | EA | CAE | CA | CA | CA | DA | EA | |
| CA | | | | CAE | | | EA | EA | CA | CA | CA | CA | EA | CA | |
| CA,5 | | | | | | | EA | | | | | | | | |
| CA | | | | | | | | CA | | | CA | CAE | EA | CA | |
| CA | | | | | | | | CA | | | CA | CA | EA | CA | |
| CA | | | | | | | | | | | | CA | EA | CA | |
| CAE | | | | | | | | | | | | CA | | | |
| CA | | | | | | | | | | | | | EA | CA | |
| CA | | | | | | | | | | | | | EA | CA | |
| CA | | | | | | | | | | | | | EA | CA | |
| CA | | | | | | | | | | | | | EA | CA | |
| CA | | | | | | | | | | | | | EA | CA | |

Data given can be changed without notice.

Edition 11/2017

ZETKAMA Sp. z o.o.
ul. 3 Maja 12
PL 57-410 Ścinawka Średnia

tel. +48 74 8652 174
tel. +48 74 8652 111
fax +48 74 8652 199

e-mail marketing@zetskama.com.pl
www.zetskama.com



figure

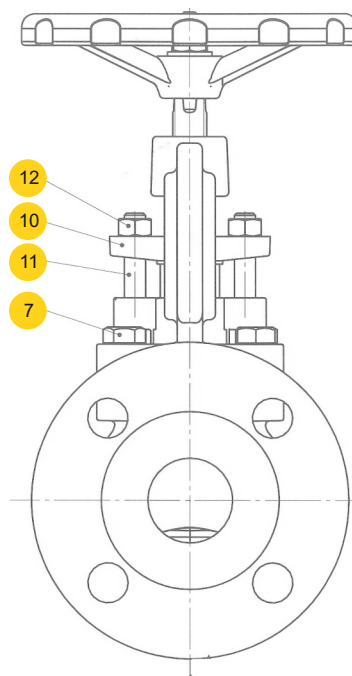
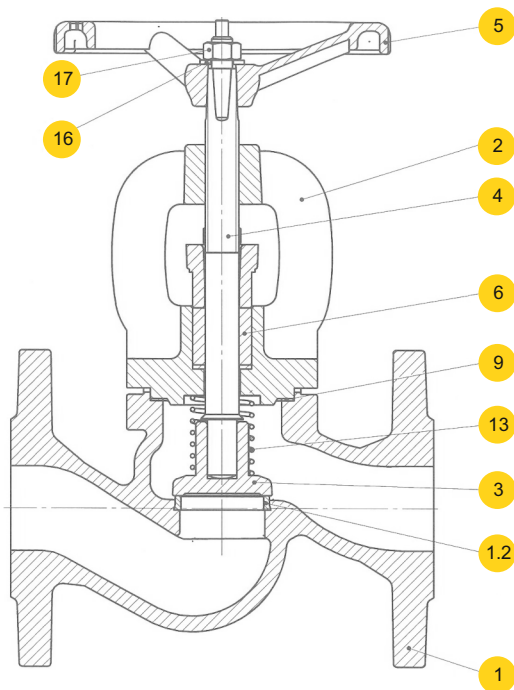
215

ends
form

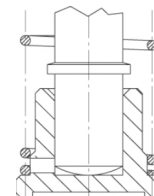
flange
straight

MATERIALS

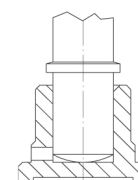
SCREW-DOWN STOP AND CHECK VALVE



type 31, 32, 33



type 41, 42, 43



| | body material | A | | | C | | | E |
|------------------|---------------|-------------------------------------|-----------------------|-------------|---|----------------------|------------|-------------------------|
| | | type | 31;41* | 32;42* | 33;43* | 31;41* | 32;42* | 33;43* |
| 1 | body | EN – GJL-250 5.1301 (ex. J11040) | | | EN – GJS-400 – 18-LT 5.3103 (ex. JS1025) | | | CuSn5Zn5Pb5-C CC491K |
| 1.2 | seat ring | X12Cr13 1.4006 | CuSn10 – C CC480K | | X12Cr13 1.4006 | CuSn10 – C CC480K | | CuSn5Zn5Pb5-C CC491K |
| 2 | bonnet | EN – GJL-250 5.1301 (ex. J11040) | | | EN – GJS-400 – 18-LT 5.3103 (ex. JS1025) | | | CuSn5Zn5Pb5-C CC491K |
| 3 | disc | X20Cr13 1.4021 | CuSn10 – C CC480K | | X20Cr13 1.4021 | CuSn10 – C CC480K | | CuSn5Zn5Pb5-C CC491K |
| 4 | stem | X20Cr13 1.4021 | CuZn40Mn1,5 | CuSn10 – C | X20Cr13 1.4021 | CuZn40Mn1,5 | CuSn10 – C | CuZn35Ni |
| 5 | hand-wheel | EN-GJS500-7 5.3200 (ex. JS1050) | | | | | | |
| 6 | gland packing | all- graphite | | | | | | |
| 7 | hexagon bolt | 8.8 | | | A2-70 | 8,8 | | A2-70 |
| 9 | gasket | graphite+ NiCr | | | | | | |
| 10 | gland | EN – GJL-250 5.1301 (ex. J11040) | | | EN – GJS-400 – 18-LT 5.3103 (ex. JS1025) | | | CuSn5Zn5Pb5-C CC491K |
| 11 | T-bolt | 5.8 + zinc galvanized | | | | | | A2-70 |
| 12 | nut | 8 + zinc galvanized | | | | | | A2-70 |
| 13 | spring | X17CrNi16-2 | X17CrNi16-2 1.4057 | X17CrNi16-2 | X17CrNi16-2 1.4057 | | | CuSn6 |
| 14 | washer | carbon steel + zinc galvanized | | | | | | X5CrNi18-10 1.4301 |
| 15 | nut | 8 zine galvanized | | | | | | A2-70 |
| max. temperature | | 350°C | 225°C | 225°C | 350°C | 225°C | 225°C | 200°C |

* without spring

Data given can be changed without notice.

Edition 11/2017



figure

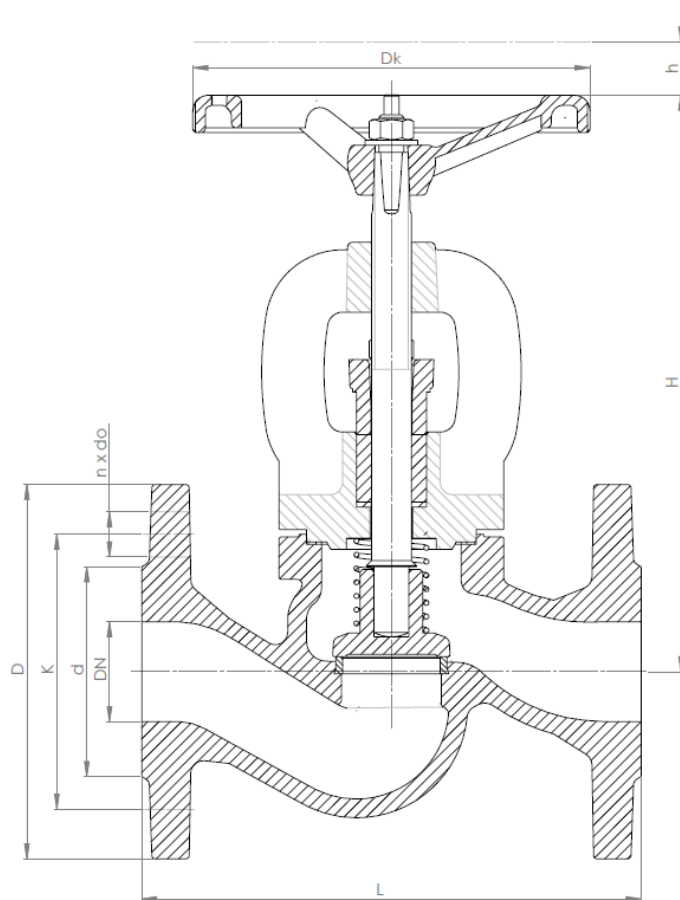
215

ends
form

flange
straight

DIMENSIONS

SCREW-DOWN STOP AND CHECK VALVE



| DN | PN 6 | | | | PN 16 | | | | PN 25 | | | | PN 6,16,25 | | | | | ▲▲ | Kv _s | |
|-----|------|-----|-----|--------|-------|-----|-----|---------|-------|-----|-----|---------|------------|-----|-----|-----|------|------|-----------------|-------------------|
| | D | d | K | n x d | D | d | K | n x d | D | d | K | n x d | Dk | h | L | H | kg | | | m ³ /h |
| mm | | | | | | | | | | | | | | | | | | | | |
| 15 | 80 | 38 | 55 | 4 x 11 | 95 | 46 | 65 | 4 x 14 | 95 | 46 | 65 | 4 x 14 | 100 | 5 | 130 | 167 | 3,3 | 5,9 | | |
| 20 | 90 | 48 | 65 | 4 x 11 | 105 | 56 | 75 | 4 x 14 | 105 | 56 | 75 | 4 x 14 | 100 | 5,5 | 150 | 167 | 3,9 | 7,4 | | |
| 25 | 100 | 58 | 75 | 4 x 11 | 115 | 65 | 85 | 4 x 14 | 115 | 65 | 85 | 4 x 14 | 120 | 7 | 160 | 175 | 5 | 13 | | |
| 32 | 120 | 69 | 90 | 4 x 14 | 140 | 76 | 100 | 4 x 19 | 140 | 76 | 100 | 4 x 19 | 120 | 14 | 180 | 186 | 6,6 | 18 | | |
| 40 | 130 | 78 | 100 | 4 x 14 | 150 | 84 | 110 | 4 x 19 | 150 | 84 | 110 | 4 x 19 | 160 | 20 | 200 | 235 | 8,4 | 30 | | |
| 50 | 140 | 88 | 110 | 4 x 14 | 165 | 99 | 125 | 4 x 19 | 165 | 99 | 125 | 4 x 19 | 160 | 25 | 230 | 248 | 12 | 41 | | |
| 65 | 160 | 108 | 130 | 4 x 14 | 185 | 118 | 145 | 4 x 19 | 185 | 118 | 145 | 8 x 19 | 180 | 35 | 290 | 260 | 17,3 | 79 | | |
| 80 | 190 | 124 | 150 | 4 x 19 | 200 | 132 | 160 | 8 x 19 | 200 | 132 | 160 | 8 x 19 | 200 | 41 | 310 | 291 | 22,7 | 115 | | |
| 100 | 210 | 144 | 170 | 4 x 19 | 220 | 156 | 180 | 8 x 19 | 235 | 156 | 190 | 8 x 19 | 250 | 31 | 350 | 338 | 35,8 | 181 | | |
| 125 | 240 | 174 | 200 | 8 x 19 | 250 | 184 | 210 | 8 x 19 | 270 | 184 | 220 | 8 x 23 | 250 | 48 | 400 | 384 | 52,8 | 225 | | |
| 150 | 265 | 199 | 225 | 8 x 19 | 285 | 211 | 240 | 8 x 23 | 300 | 211 | 250 | 8 x 28 | 320 | 54 | 480 | 429 | 74,2 | 364 | | |
| 200 | 320 | 254 | 280 | 8 x 19 | 340 | 266 | 295 | 12 x 23 | 360 | 274 | 310 | 12 x 28 | 360 | 77 | 600 | 529 | 126 | 690 | | |
| 250 | - | - | - | - | 405 | 355 | 355 | 12 x 28 | - | - | - | - | 360 | 120 | 730 | 638 | 200 | 1010 | | |
| 300 | - | - | - | - | 460 | 370 | 410 | 12 x 28 | - | - | - | - | 500 | 120 | 850 | 710 | 315 | 1460 | | |

Data given can be changed without notice.

Edition 11/2017



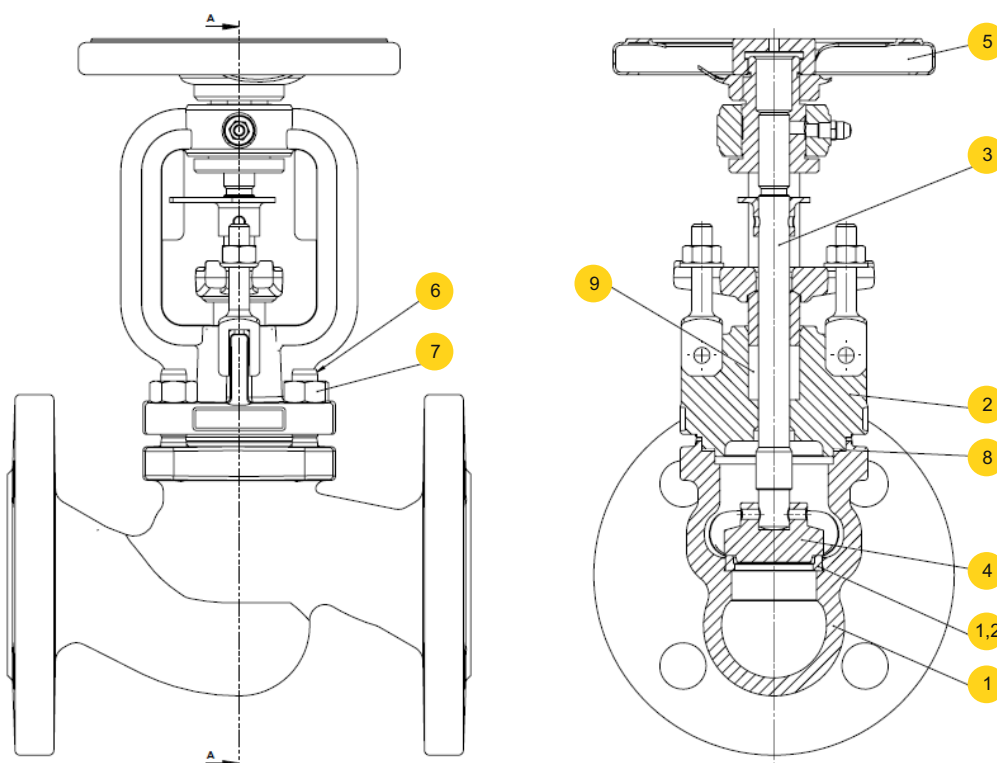
figure

215

ends
form

flange
straight

MATERIALS



| | body material | F | I |
|-----|------------------|---|--|
| | type | 01; 04; 31; 71 | 09; 10; 40; 71 |
| 1 | body | GP240GH 1.0619 | G-X5CrNiMo19-11-2 1.4408 |
| 1,2 | seat ring | DN 15-50 X20Cr13 1.4021 DN 65-100 stellit | X5CrNiMo17-12-2 1.4401 DN 65-100 napoina |
| 2 | bonnet | GP240GH 1.0619 | G-X5CrNiMo19-11-2 1.4408 |
| 3 | stem | | X6CrNiMoTi17-12-2 1.4571 |
| 4 | disc | | X6CrNiMoTi17-12-2 1.4571 |
| 5 | hand-wheel | | steel |
| 6 | stud bolt | | A4-70 |
| 7 | nut | | A4 |
| 8 | bonnet gasket | | graphite+CrNiSt |
| 9 | gland packing | | graphite |
| | max. temperature | | 400°C |

Data given can be changed without notice.

Edition 11/2017

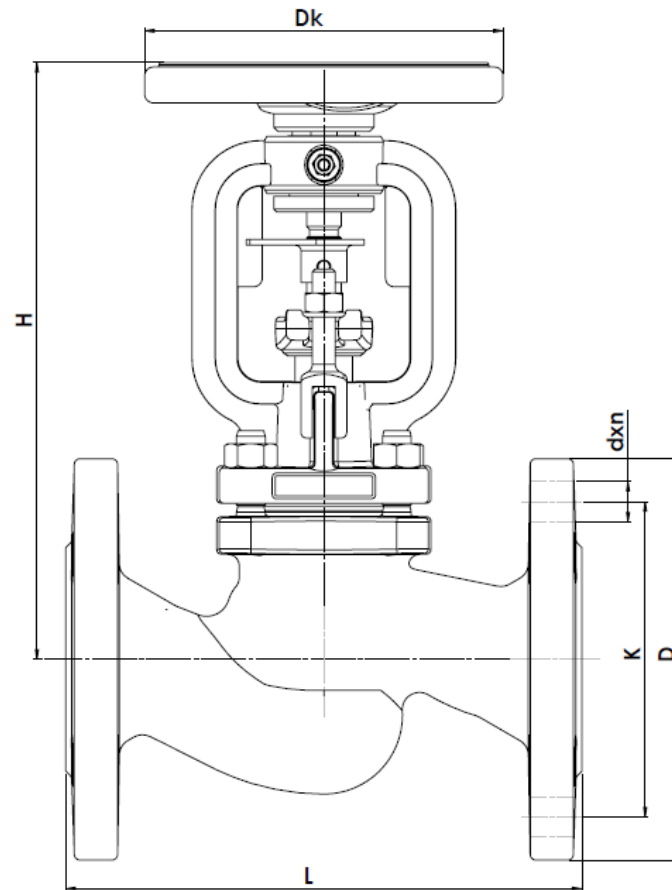


figure

215

ends
formflange
straight

DIMENSIONS



| DN | L | H | Dk | D | K | dxn | |
|-----|-----|-----|-----|-----|-----|-------|------|
| mm | | | | | | | kg |
| 15 | 130 | 205 | 125 | 95 | 65 | 14x4 | 4,3 |
| 20 | 150 | 205 | 125 | 105 | 75 | 14x4 | 5,0 |
| 25 | 160 | 205 | 125 | 115 | 85 | 14x4 | 5,8 |
| 32 | 180 | 210 | 125 | 140 | 100 | 18x4 | 7,5 |
| 40 | 200 | 250 | 200 | 150 | 110 | 18x4 | 11,7 |
| 50 | 230 | 250 | 200 | 165 | 125 | 18x4 | 14,2 |
| 65 | 290 | 280 | 250 | 185 | 145 | 18x8 | 20,4 |
| 80 | 310 | 320 | 250 | 200 | 160 | 18x8 | 26,9 |
| 100 | 350 | 425 | 300 | 235 | 190 | 22x8 | 44,5 |
| 125 | 400 | 470 | 300 | 270 | 220 | 26x8 | 65,2 |
| 150 | 480 | 495 | 400 | 300 | 250 | 26x8 | 93 |
| 200 | 600 | 613 | 500 | 375 | 320 | 30x12 | 157 |

Data given can be changed without notice.

Edition 11/2017

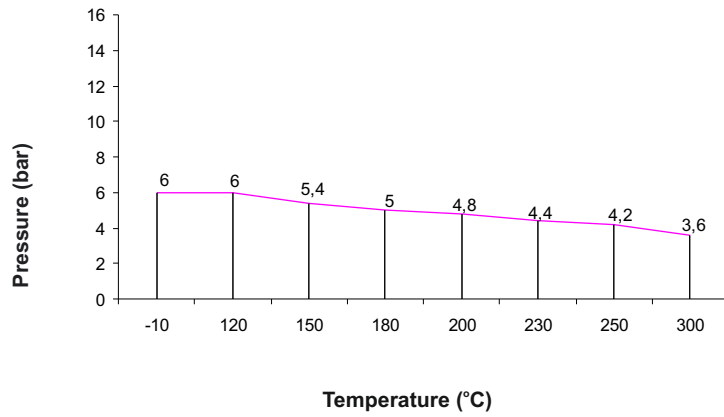


figure

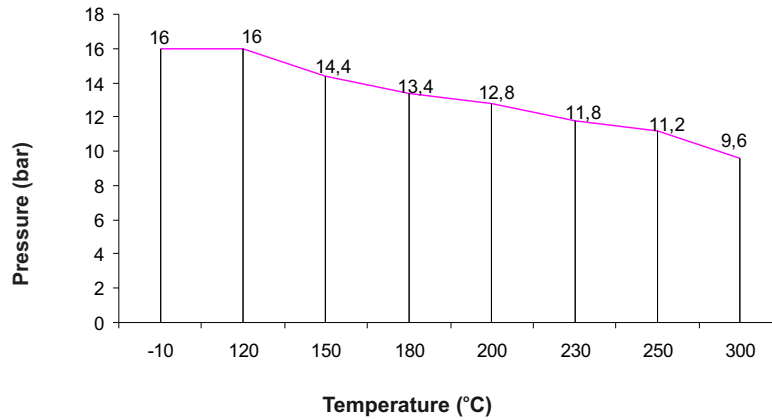
215

ends
formflange
straight

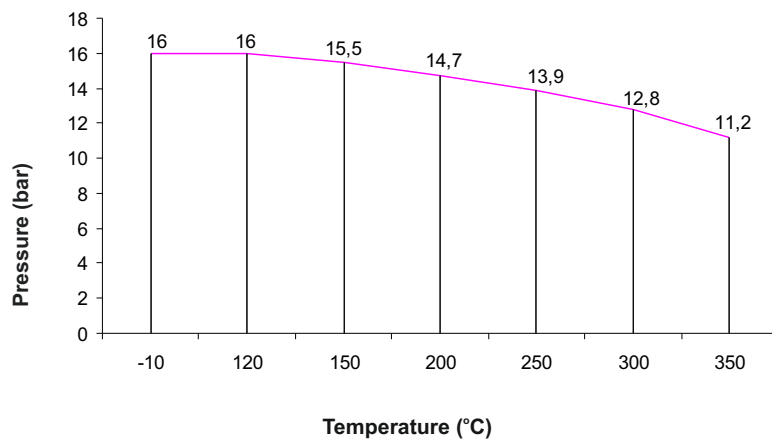
PRESSURE-TEMPERATURE RATINGS



Allowed working conditions range
PN 6 EN-GJL-250 5.1301



Allowed working conditions range
PN 16 EN-GJL-250 5.1301



Allowed working conditions range
PN 16 EN-GJS-400-18-LT 5.3103

Data given can be changed without notice.

Edition 11/2017



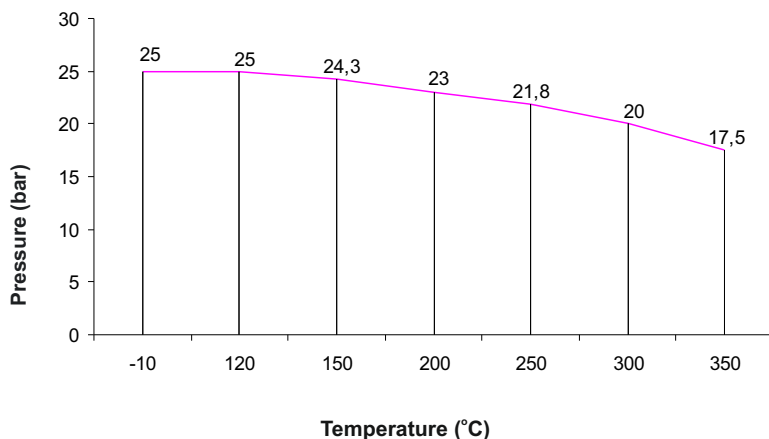
figure

215

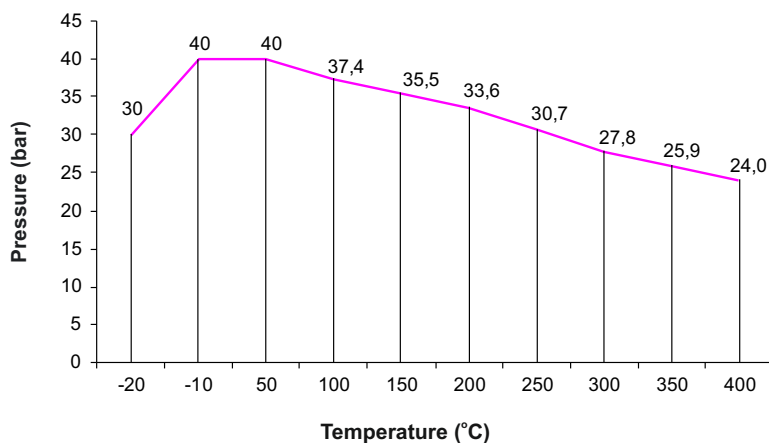
ends
form

flange
straight

PRESSURE-TEMPERATURE RATINGS



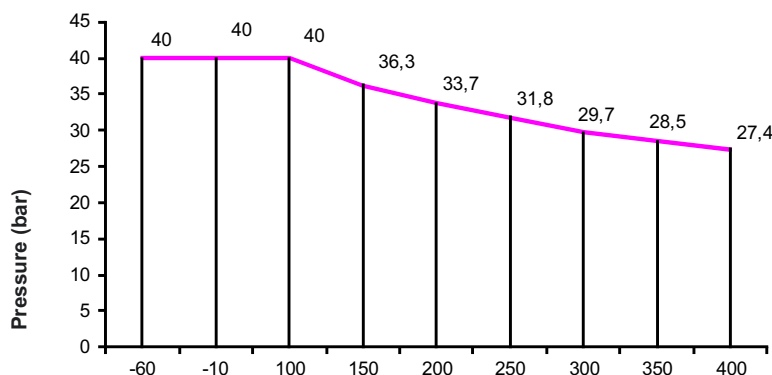
Allowed working conditions range
PN 25 EN-GJS-400-18-LT 5.3103



Allowed working conditions range
PN 40 GP24GH 1.0619

Allowable pressure difference which
can be observed on both sides of the closing element
Refers for valves in F execution

| PN | Allowable pressure difference [bar] | | | | | |
|------|--|-------|-------|-------|-------|-------|
| | DN10 - 100 | DN125 | DN150 | DN200 | DN250 | DN300 |
| PN40 | 40 | 33 | 21 | 14 | 9 | 6 |



Allowed working conditions range
PN 40 G-XCrNiMo10-11-2 1.4408

Data given can be changed without notice.

Edition 11/2017



figure **215**

ends form flange straight

TYPES

| figure | body material | nominal diameter DN | nominal pressure PN | type |
|--------|-----------------------------------|---------------------|---------------------|--|
| 215 | A grey cast iron EN-GJL-250 | 15-50 mm | A 6bar | 00 • stem and disc connection - fixed - rolled • stem, disc and seat ring - stainless steel |
| | | 15-150 mm | A 6bar | 01 • stem and disc connection - nut • stem, disc and seat ring - stainless steel |
| | | 200-300 mm | A 6bar | 04 • stem and disc connection - nut • stem, disc and seat ring - stainless steel • balancing disc |
| | | 15-150 mm | A 6bar | 02 • stem and disc connection nut • stem - brass, disc and seat ring - bronze |
| | | 200-300 mm | A 6bar | 05 • stem and disc connection - nut • stem- brass, disc and seat ring - bronze • balancing disc |
| | | 15-150 mm | A 6bar | 03 • stem and disc connection nut • stem, disc and seat ring - bronze |
| | | 200-300 mm | A 6bar | 13 • stem and disc connection - nut • stem, disc and seat ring - bronze • balancing disc |
| | | 15-300 mm | A 6bar | 31 • loose disc with spring • stem, disc and seat ring - stainless steel |
| | | 15-300 mm | A 6bar | 41 • loose disc without spring • stem, disc and seat ring - stainless steel |
| | | 15-300 mm | A 6bar | 32 • loose disc with spring • stem - brass, disc and seat ring - bronze |
| | | 15-300 mm | A 6bar | 42 • loose disc without spring • stem - brass, disc and seat ring - bronze |
| | | 15-300 mm | A 6bar | 33 • loose disc with spring • stem, disc and seat ring - bronze |
| | | 15-300 mm | A 6bar | 43 • loose disc without spring • stem, disc and seat ring - bronze |
| | | 15-300 mm | A 6bar | 71 • stem and disc connection - nut • stem, throttling disc and seat ring - stainless steel • throttling disc • without position indicator |
| | | 15-300 mm | A 6bar | 91 • stem and disc connection - nut • stem, throttling disc and seat ring - stainless steel • throttling disc • with position indicator |
| | | 15-300 mm | A 6bar | 72 • stem and disc connection - nut • stem- brass, throttling disc and seat ring - bronze • throttling disc • without position indicator |
| | | 15-300 mm | A 6bar | 92 • stem and disc connection - nut • stem - brass, throttling disc and seat ring - bronze • throttling disc • with position indicator |

Data given can be changed without notice.

Edition 11/2017



figure **215**

ends form flange straight

TYPES

| figure | body material | nominal diameter DN | nominal pressure PN | type |
|-----------|-----------------------------------|--|---------------------|--|
| 215 | A grey cast iron EN-GJL-250 | 15-50 mm | C 16bar | 00 • stem and disc connection - fixed - rolled • stem, disc and seat ring - stainless steel |
| | | 15-150 mm | C 16bar | 01 • stem and disc connection - nut • stem, disc and seat ring - stainless steel |
| | | 200-300 mm | C 16bar | 04 • stem and disc connection - nut • stem, disc and seat ring - stainless steel • balancing disc |
| | | 15-150 mm | C 16bar | 02 • stem and disc connection nut • stem - brass, disc and seat ring - bronze |
| | | 200-300 mm | C 16bar | 05 • stem and disc connection - nut • stem- brass, disc and seat ring - bronze • balancing disc |
| | | 15-150 mm | C 16bar | 03 • stem and disc connection nut • stem, disc and seat ring - bronze |
| | | 200-300 mm | C 16bar | 13 • stem and disc connection - nut • stem, disc and seat ring - bronze • balancing disc |
| | | 15-300 mm | C 16bar | 31 • loose disc with spring • stem, disc and seat ring - stainless steel |
| | | 15-300 mm | C 16bar | 41 • loose disc without spring • stem, disc and seat ring - stainless steel |
| | | 15-300 mm | C 16bar | 32 • loose disc with spring • stem - brass, disc and seat ring - bronze |
| | | 15-300 mm | C 16bar | 42 • loose disc without spring • stem - brass, disc and seat ring - bronze |
| | | 15-300 mm | C 16bar | 33 • loose disc with spring • stem, disc and seat ring - bronze |
| | | 15-300 mm | C 16bar | 43 • loose disc without spring • stem, disc and seat ring - bronze |
| | | 15-300 mm | C 16bar | 71 • stem and disc connection - nut • stem, throttling disc and seat ring - stainless steel • throttling disc • without position indicator |
| | | 15-300 mm | C 16bar | 91 • stem and disc connection - nut • stem, throttling disc and seat ring - stainless steel • throttling disc • with position indicator |
| | | 15-300 mm | C 16bar | 72 • stem and disc connection - nut • stem- brass, throttling disc and seat ring - bronze • throttling disc • without position indicator |
| 15-300 mm | C 16bar | 92 • stem and disc connection - nut • stem - brass, throttling disc and seat ring - bronze • throttling disc • with position indicator | | |

Data given can be changed without notice.

Edition 11/2017



figure **215**

ends form flange straight

TYPES

| figure | body material | nominal diameter DN | nominal pressure PN | type |
|--------|-----------------------------------|---------------------|---------------------|---|
| 215 | A grey cast iron EN-GJL-250 | 15-50 mm | C 16bar | 00 - D Tmax 80 °C • stem and disc connection - fixed - rolled • stem, disc and seat ring - stainless steel epoxy paint |
| | | 15-150 mm | C 16bar | 01 - D Tmax 80 °C • stem and disc connection - nut • stem, disc and seat ring - stainless steel epoxy paint |
| | | 200-300 mm | C 16bar | 04 - D Tmax 80 °C • stem and disc connection - nut • stem, disc and seat ring - stainless steel • balancing disc epoxy paint |



figure **215**

ends form flange straight

TYPES

| figure | body material | nominal diameter DN | nominal pressure PN | type |
|--------|--|---------------------|---------------------|---|
| 215 | C nodular cast iron EN-GJS-400-18-LT | 15-150 mm | C 16bar | 01 • stem and disc connection - nut • stem, disc and seat ring - stainless steel |
| | | 200 mm | C 16bar | 04 • stem and disc connection - nut • stem, disc and seat ring - stainless steel • balancing disc |
| | | 15-150 mm | C 16bar | 02 • stem and disc connection nut • stem - brass, disc and seat ring - bronze |
| | | 200 mm | C 16bar | 05 • stem and disc connection - nut • stem - brass, disc and seat ring - bronze • balancing disc |
| | | 15-150 mm | C 16bar | 03 • stem and disc connection nut • stem, disc and seat ring - bronze |
| | | 200 mm | C 16bar | 13 • stem and disc connection - nut • stem, disc and seat ring - bronze • balancing disc |
| | | 15-200 mm | C 16bar | 31 • loose disc with spring • stem, disc and seat ring - stainless steel |
| | | 15-200 mm | C 16bar | 41 • loose disc without spring • stem, disc and seat ring - stainless steel |
| | | 15-200 mm | C 16bar | 32 • loose disc with spring • stem - brass, disc and seat ring - bronze |
| | | 15-200 mm | C 16bar | 42 • loose disc without spring • stem - brass, disc and seat ring - bronze |
| | | 15-200 mm | C 16bar | 33 • loose disc with spring • stem, disc and seat ring - bronze |
| | | 15-200 mm | C 16bar | 43 • loose disc without spring • stem, disc and seat ring - bronze |
| | | 15-200 mm | C 16bar | 71 • stem and disc connection - nut • stem, throttling disc and seat ring - stainless steel • throttling disc • without position indicator |
| | | 15-200 mm | C 16bar | 91 • stem and disc connection - nut • stem, throttling disc and seat ring - stainless steel • throttling disc • with position indicator |
| | | 15-200 mm | C 16bar | 72 • stem and disc connection - nut • stem - brass, throttling disc and seat ring - bronze • throttling disc • without position indicator |
| | | 15-200 mm | C 16bar | 92 • stem and disc connection - nut • stem - brass, throttling disc and seat ring - bronze • throttling disc • with position indicator |

Data given can be changed without notice.

Edition 11/2017



figure

215

ends
form

flange
straight

TYPES

| figure | body material | nominal diameter DN | nominal pressure PN | type |
|--------|--|------------------------|------------------------|---|
| 215 | C nodular cast iron EN-GJS-400-18-LT | 15-150 mm | D 25bar | 01 • stem and disc connection - nut • stem, disc and seat ring - stainless steel |
| | | 200 mm | D 25bar | 04 • stem and disc connection - nut • stem, disc and seat ring - stainless steel • balancing disc |
| | | 15-150 mm | D 25bar | 02 • stem and disc connection nut • stem - brass, disc and seat ring - bronze |
| | | 200 mm | D 25bar | 05 • stem and disc connection - nut • stem- brass, disc and seat ring - bronze • balancing disc |
| | | 15-150 mm | D 25bar | 03 • stem and disc connection nut • stem, disc and seat ring - bronze |
| | | 200 mm | D 25bar | 13 • stem and disc connection - nut • stem, disc and seat ring - bronze • balancing disc |
| | | 15-200 mm | D 25bar | 31 • loose disc with spring • stem, disc and seat ring - stainless steel |
| | | 15-200 mm | D 25bar | 41 • loose disc without spring • stem, disc and seat ring - stainless steel |
| | | 15-200 mm | D 25bar | 32 • loose disc with spring • stem - brass, disc and seat ring - bronze |
| | | 15-200 mm | D 25bar | 42 • loose disc without spring • stem - brass, disc and seat ring - bronze |
| | | 15-200 mm | D 25bar | 33 • loose disc with spring • stem, disc and seat ring - bronze |
| | | 15-200 mm | D 25bar | 43 • loose disc without spring • stem, disc and seat ring - bronze |
| | | 15-200 mm | D 25bar | 71 • stem and disc connection - nut • stem, throttling disc and seat ring - stainless steel • throttling disc • without position indicator |
| | | 15-200 mm | D 25bar | 91 • stem and disc connection - nut • stem, throttling disc and seat ring - stainless steel • throttling disc • with position indicator |

Data given can be changed without notice.

Edition 11/2017



figure

215

ends
form

flange
straight

TYPES

| figure | body material | nominal diameter DN | nominal pressure PN | type |
|--------|------------------------------|------------------------|------------------------|--|
| 215 | E bronze CuZn5Zn5Pb5-C | 15-125 mm | C 16bar | 03 • stem and disc connection - nut • stem, disc and seat ring - bronze |
| | | | B 10bar | 33 • loose disc with spring • stem, disc and seat ring - bronze |
| | | | A 6bar | 43 • loose disc without spring - stem, disc and seat ring - bronze |
| | | 150-200 mm | B 10bar | 23 • stem and disc connection - nut • with position indicator • stem, disc and seat ring - bronze |
| | | | | 53 • loose disc with spring • with position indicator • stem, disc and seat ring - bronze |
| | | | | 63 • loose disc without spring - with position indicator • stem, disc and seat ring - bronze |
| | | | | 73 • stem and disc connection - nut • throttling disc - bronze • without position indicator |
| | | 15-150 mm | C 16bar | 93 • stem and disc connection - nut • throttling disc - bronze • with position indicator |

Data given can be changed without notice.

Edition 11/2017



figure **215**

ends form flange straight

TYPES

| figure | body material | nominal diameter DN | nominal pressure PN | type |
|--------|--|---------------------|---------------------|---|
| 215 | F cast steel GP240GH 1.0619 | 15-150 mm | E 40bar | 01 * stem and disc connection - nut * stem, disc and seat ring - stainless steel |
| | | 200* mm | E 40bar | 00 * stem and disc connection balls * stem, throttling disc and seat ring - stainless steel |
| | | 15-150 mm | E 40bar | 11 stem and disc connection - nut * stem and disc - stainless steel * disc stellited Stellite6 * seat ring Stellite6 |
| | | 15-200 mm | E 40bar | 31 * loose disc with spring * stem, disc and seat ring - stainless steel |
| | | 15-200 mm | E 40bar | 71 * stem and disc connection - nut * stem, disc and seat ring - stainless steel * throttling disc |
| | I cast stainless steel G-X5CrNiMo19-11-2 1.4408 | 15-100 mm | E 40bar | 10 * stem and disc connection - nut * stem, disc and seat ring - acid resistant steel |
| | | 125-200 mm | E 40bar | 09 * stem and disc connection - nut * stem, disc and seat ring - acid resistant steel * balancing disc |
| | | 15-200 mm | E 40bar | 40 * loose disc with spring * stem, disc and seat ring - acid resistant steel |

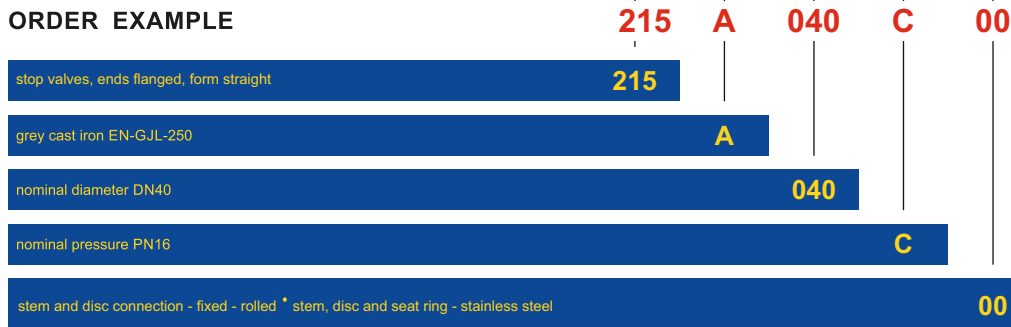
* DN 200 on request

ORDERING

To place an order please use our product number (index)



ORDER EXAMPLE



Data given can be changed without notice.

Edition 11/2017